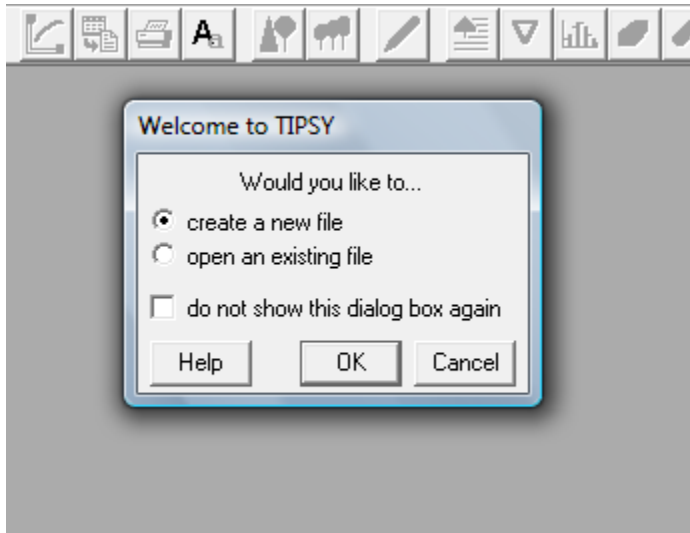


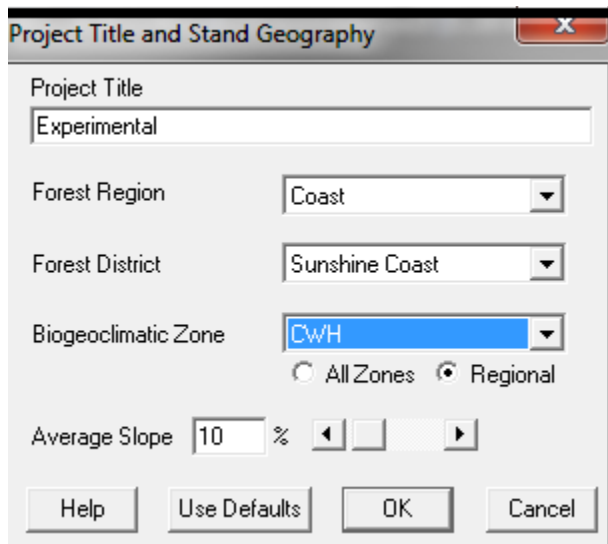
## Setting up your TIPSy workspace

1. Open **TIPSy v4.3**. (*Start → Forestry applications → TIPSy 4.3 → TIPSy 4.3*)
2. Choose to “create a new file”. Click **OK**.

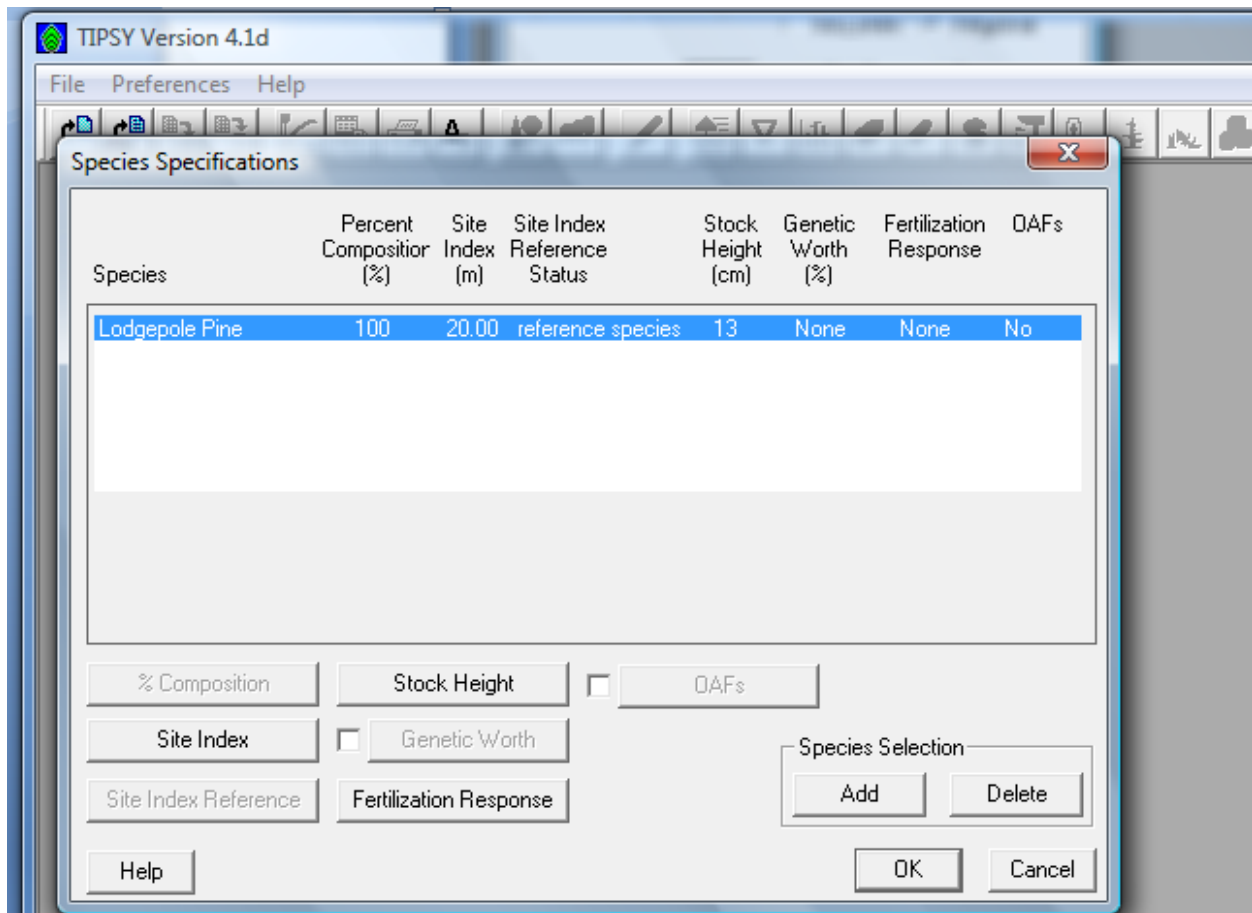


### ***Project Title and Stand Geography***

1. Enter the title you wish to use for your project.
2. Set your Forest Region, Forest District, Biogeoclimatic Zone (BEC)- leave the option as *Regional* - and slope. Click **OK**.



## Species Specifications



1. Unless your reference species is *Lodgepole Pine*, delete the default species by clicking **Delete**.
2. Click **Add**. From the “Add a species” window, choose your desired species. Click **OK**.
3. In the “Site Index” window, manually enter your site index and click **OK**.
4. In the percent composition window, manually enter the composition percentage of the species and click **OK**.
5. Now that you are back to the “Species Specifications” window, click **OK**.

## Stand Specifications

The screenshot shows a dialog box titled "Stand Specifications". It is divided into three main sections: "Stand Regeneration", "Operational Adjustment Factors", and "Treatment".

- Stand Regeneration:** A dropdown menu is set to "Natural". Below it, "Delay:" is set to "2" years. "Density:" is set to "1000". There is a "Plot Initial Stem Map" button.
- Operational Adjustment Factors:** "QAF1:" is set to "0.85" and "QAF2:" is set to "0.95". There are navigation arrows below these values. There are three checkboxes: "Custom QAFs", "Decay, Waste & Breakage", and "Variable Retention/Windthrow", all of which are currently unchecked.
- Treatment:** There are three checkboxes: "PCT", "Comm. Thinning", and "Fertilization". Each checkbox has a "to" button below it. There is also an "Applications" button.

At the bottom of the dialog box are "Help", "OK", and "Cancel" buttons.

1. In the *Stand Regeneration* section of the “*Stand Specifications*” window, select whether you want to model an artificially regenerated stand (Planted) or naturally regenerated stand (Natural).

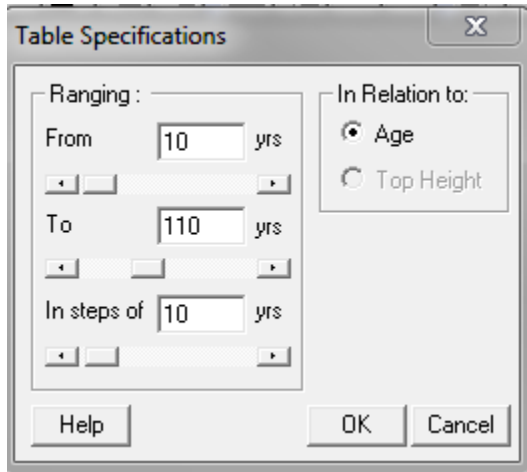
**NOTE:** If you select “Planted”, the delay will automatically be set to 0yrs; if you choose “Natural”, the delay will be 2yrs; leave these values as they are.

2. Click the number below **Density**. Choose your desired number of stems per hectare (trees/ha). Click **OK**.

**NOTE:** If you want to incorporate commercial thinning into your modelling, check the “Comm. Thinning” box and click on button below. Set your desired height, and stems/ha, and click OK.

3. Now that you are back to the “*Stand Specifications*” window, click **OK**.

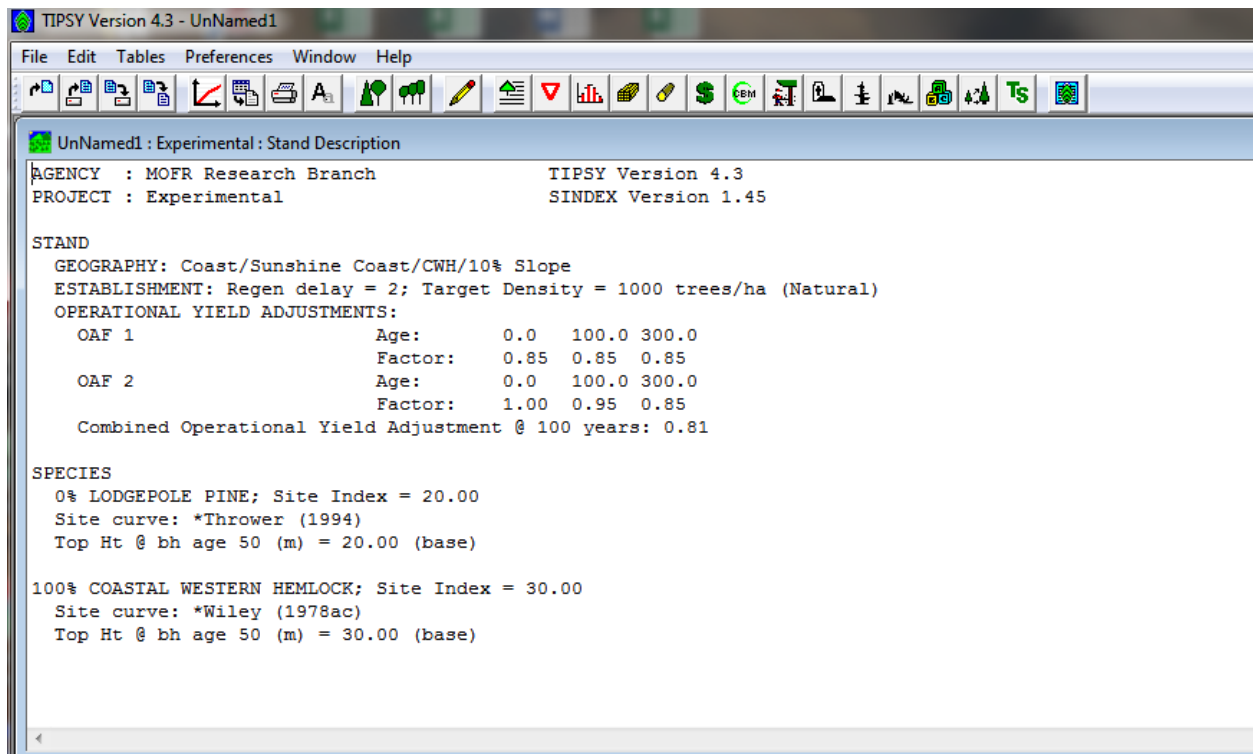
## Table Specifications



1. Set your range in relation to age in increments of 10yrs Click the **OK**.

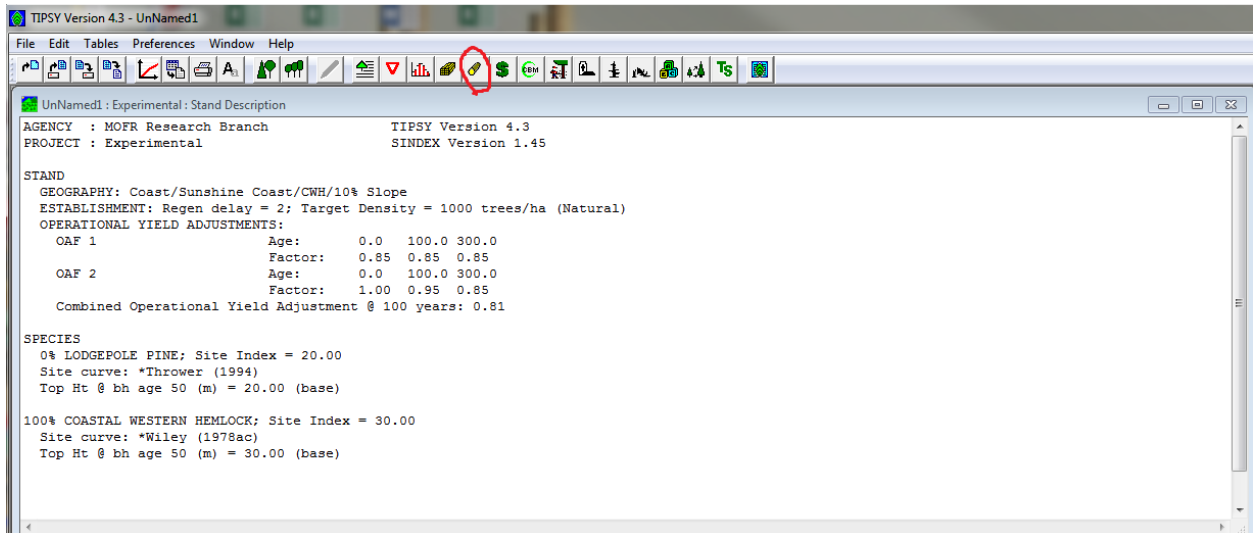
## Stand Description Display

1. Click **OK**.



## Generating a log volume table in TIPSYP

1. Once your workspace is set up with all the specific details you require, you will have a window similar to the one below:



2. To generate a log table, click on the icon with the single log (circled above). The resulting table should look resemble the following:

TIPSYP Version 4.3 - UnNamed1

File Edit Tables Preferences Window Help

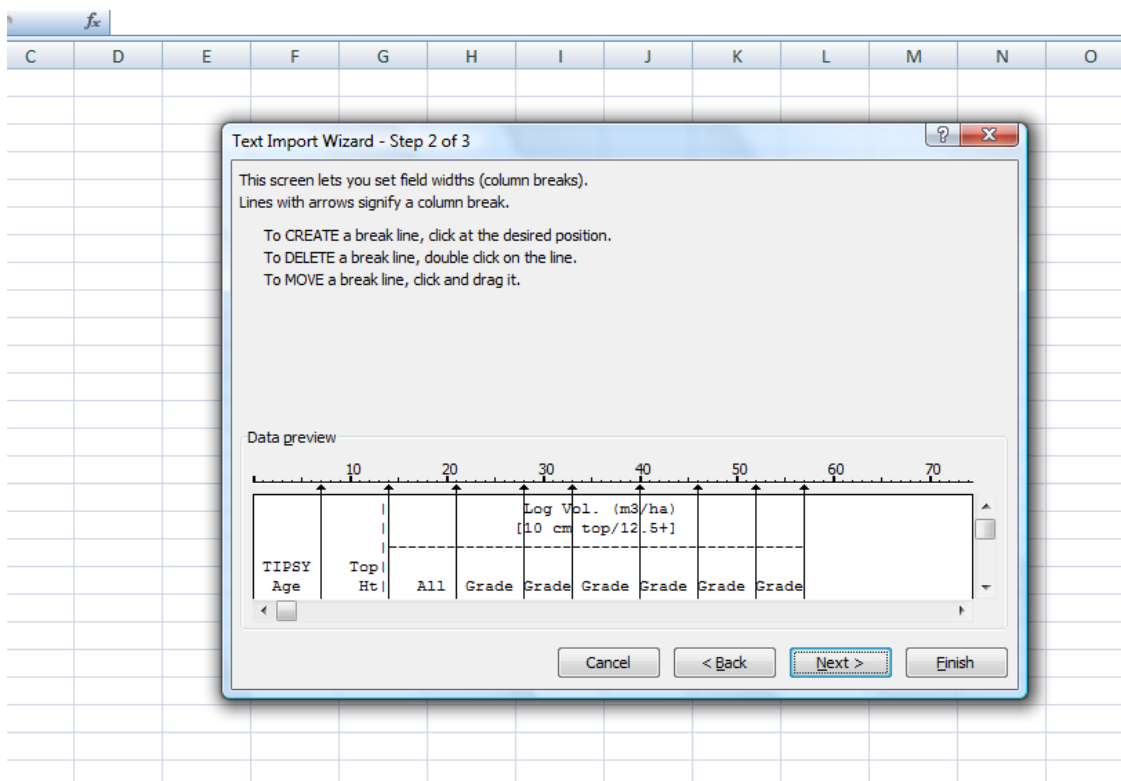
UnNamed1: Experimental: Log Table

Some H grade logs are incorrectly graded as I grade. See Help.

		Log Vol. (m3/ha)						
		[10 cm top/12.5+]						
TIPSYP Age (yr)	Top Ht (m)	All Grades	H	I	J	U	X	Y
10.0	2.3	0	0	0	0	0	0	0
20.0	9.0	0	0	0	0	0	0	0
30.0	16.0	57	0	0	31	20	5	1
40.0	22.0	212	0	3	166	26	15	2
50.0	27.0	382	0	35	304	25	17	1
60.0	31.2	543	0	119	380	26	17	1
70.0	34.8	704	0	244	419	24	16	1
80.0	37.9	849	11	373	426	23	15	1
90.0	40.7	977	77	445	419	21	14	1
100.0	43.0	1099	215	445	406	18	14	1
110.0	45.2	1211	389	400	392	16	13	1

## Importing TIPSy tables into Microsoft Excel

1. Copy the table in the TIPSy workspace.
2. Open **Notepad**. (*Start → All programs → Accessories → Notepad*)
3. Paste the copied table into the Notepad workspace.
4. Save the Notepad file. (*as a .txt file*)
5. Open **Microsoft Excel**. (*Start → All programs → Microsoft Office → Microsoft excel*)
6. Click the **“DATA”** tab at the top of the Excel screen.
7. Click the **“From Text”** icon. A window titled **“Import Text File”** will pop up.
8. Select your .txt file and click **“Import”**, the Text Import Wizard will pop up.
9. Select the **“Fixed Width”** option. Leaving all other options set to their default setting, click **“Next”**.
10. Set column widths for each column of your table by following instructions provided, then click **“Next”**.



11. Leave default settings in the final steps of the Text Import Wizard and click **“Finish”**.
12. Select the cell where you would like to paste your table and click **“OK”**.

**NOTE:** Once the table shows up in Excel, it's a good idea to compare it to the original table from TIPSy to make sure everything has transferred properly.